



RESEARCH for ACTION

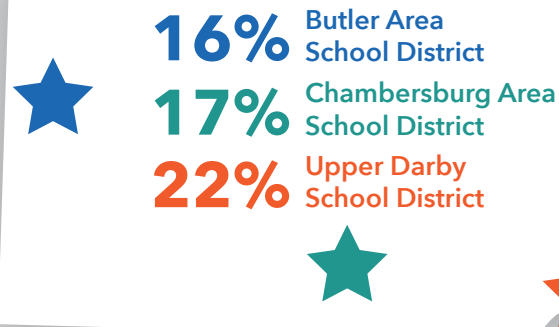
Investing So Schools Work

Recognizing the need for new estimates on how much school funding is needed in Pennsylvania school districts, Research for Action commissioned an independent project based on the research of national school funding experts, Picus Odden & Associates.

Three Pennsylvania school districts and their respective communities participated in the **Investing So Schools Work Study**. Below are the overall estimates of the funding these school districts need to provide an adequate education to their students.

Picus Odden concluded that "If such funds were provided and used as [the model] indicates, the state could **reasonably expect significant overall improvements** in student achievement and reductions in the achievement gaps linked to student demographics."

How Much Additional Funding Was Recommended?



How Were Funding Estimates Determined?

Elements of the Picus Odden & Associates Evidence-Based Model



CORE

- K-3rd grades: 15 to 1
- 4th-12th grades: 25 to 1

SPECIALISTS

- K-8 - 1 for every 5 core teachers
- 9-12 - 1 for every 3 core teachers

EXTENDED SUPPORT

- Summer School
- Extended Day
- ESL
- Tutors and Pupil Support

SPECIALIZED EDUCATION

- Gifted
- Career & Technical Education
- Special Education

PROFESSIONAL DEVELOPMENT

- 10 extra days of PD
- Instructional Coaches
- Trainers

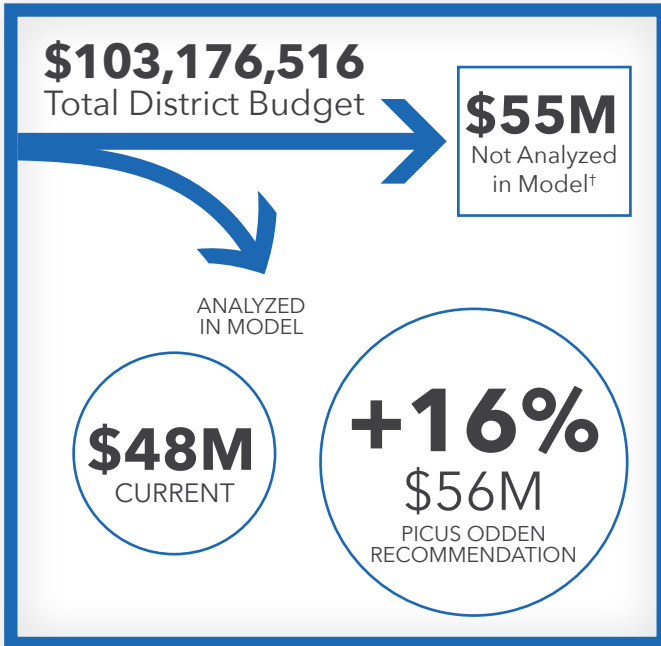
ADDITIONAL RESOURCES

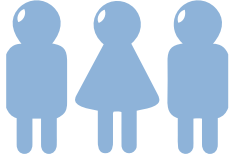
- Pupil Support
- Staff Compensation
- Technology
- Instructional Materials
- District Admin, M&O
- Site Admin



BUTLER AREA School District

Investing So Schools Work



★  **6,322**
students
in K-12†

KEY TAKEAWAYS:

- The Picus Odden Model recommends an **additional 16%** school district funding, or **\$1,225 more per pupil**.
- Community members present at a public meeting largely **agreed that more resources were needed**, although **most felt even more were needed** than recommended by the study.‡

DISTRICT FAST FACTS

1%  English Language Learners

17%  Special Education

39%  Economically At-Risk

To see the full report, visit <https://www.researchforaction.org/publications/investing-so-schools-work/>

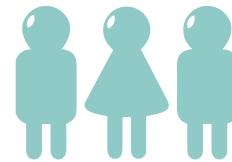
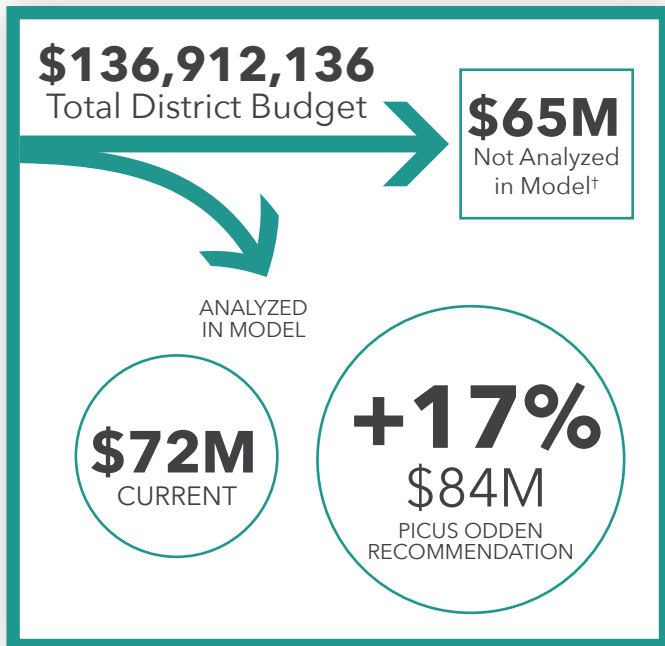
† Resources not analyzed in the Picus Odden Model include preschool, high-cost special education, the central office, student activities, transportation, food services, and capital construction costs. Student count limited to students included in the model.

‡ 65 people participated in a polling exercise at a community meeting held at Butler Area IHS including parents, teachers, principals/school administrators, board members, and other community members.



CHAMBERSBURG AREA School District

Investing So Schools Work



9,249
students
in K-12†



KEY TAKEAWAYS:

- The Picus Odden Model recommends an **additional 17%** school district funding, or **\$1,343 more per pupil**.
- Community members present at a public meeting largely **agreed that more resources were needed**, although **most felt even more were needed** than recommended by the study.‡

DISTRICT FAST FACTS

7%  English Language Learners

12%  Special Education

54%  Economically At-Risk

To see the full report, visit <https://www.researchforaction.org/publications/investing-so-schools-work/>

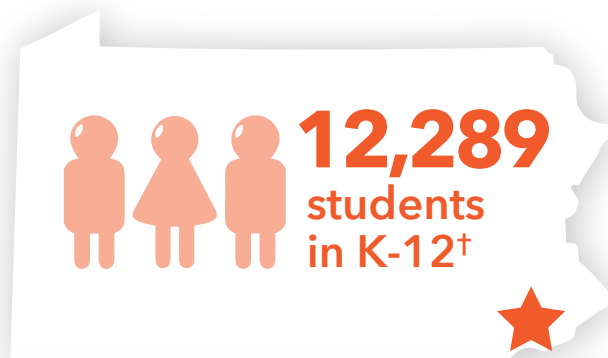
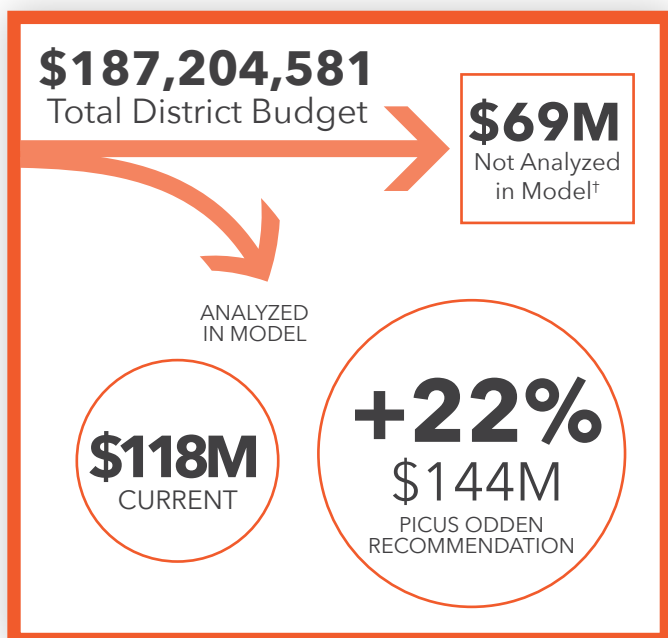
† Resources not analyzed in the Picus Odden Model include preschool, high-cost special education, the central office, student activities, transportation, food services, and capital construction costs. Student count limited to students included in the model.

‡ 57 people participated in a polling exercise at a community meeting held at Chambersburg Area MS South including parents, teachers, principals/school administrators, board members, and other community members.



UPPER DARBY School District

Investing So Schools Work



KEY TAKEAWAYS:

- The Picus Odden Model recommends an **additional 22%** school district funding, or **\$2,126 more per pupil**.
- Community members present at a public meeting largely **agreed that more resources were needed**, although **most felt even more were needed** than recommended by the study.‡

DISTRICT FAST FACTS



To see the full report, visit <https://www.researchforaction.org/publications/investing-so-schools-work/>

† Resources not analyzed in the Picus Odden Model include preschool, high-cost special education, the central office, student activities, transportation, food services, and capital construction costs. Student count limited to students included in the model.

‡ 44 people participated in a polling exercise at a community meeting held at Upper Darby HS including parents, teachers, principals/school administrators, board members, students, and other community members.